

# Human TSLPR Protein

Cat. No. TSP-HM20R

## Description

<b>Source</b>	Recombinant Human TSLPR Protein is expressed from HEK293 with hFc tag at the C-Terminus. It contains Gly25-Lys231.
<b>Accession</b>	Q9HC73-1
<b>Molecular Weight</b>	The protein has a predicted MW of 50.8 kDa. Due to glycosylation, the protein migrates to 60-75 kDa based on Bis-Tris PAGE result.
<b>Endotoxin</b>	Less than 1EU per µg by the LAL method.
<b>Purity</b>	> 95% as determined by Bis-Tris PAGE > 95% as determined by HPLC

## Formulation and Storage

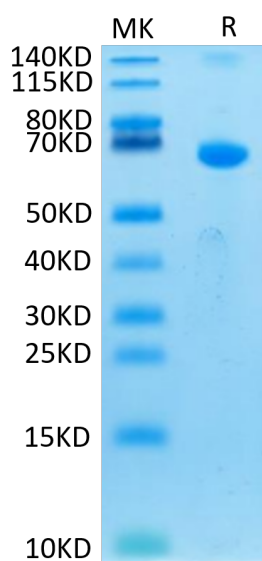
<b>Formulation</b>	Lyophilized from 0.22µm filtered solution in PBS (pH 7.4). Normally 8% trehalose is added as protectant before lyophilization.
<b>Reconstitution</b>	Centrifuge the tube before opening. Reconstituting to a concentration more than 100 µg/ml is recommended. Dissolve the lyophilized protein in distilled water.
<b>Storage</b>	-20 to -80°C for 24 months as supplied from date of receipt. -80°C for 3 months after reconstitution. Recommend to aliquot the protein into smaller quantities for optimal storage. Please minimize freeze-thaw cycles.

## Background

Thymic stromal lymphopoietin (TSLP) is an interleukin-7 (IL-7) like cytokine, which plays an important role in the regulation of immune responses to allergens. TSLP binds to a heterodimeric receptor complex composed of the IL-7 receptor alpha chain (IL-7Ralpha) and the TSLP receptor (TSLPR, also known as CRLF2).

## Assay Data

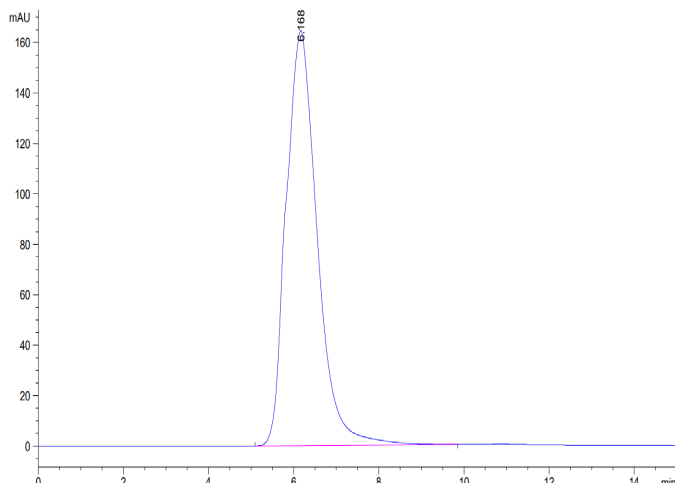
### Bis-Tris PAGE



Human TSLPR on Bis-Tris PAGE under reduced condition. The purity is greater than 95%.

### SEC-HPLC

Assay Data

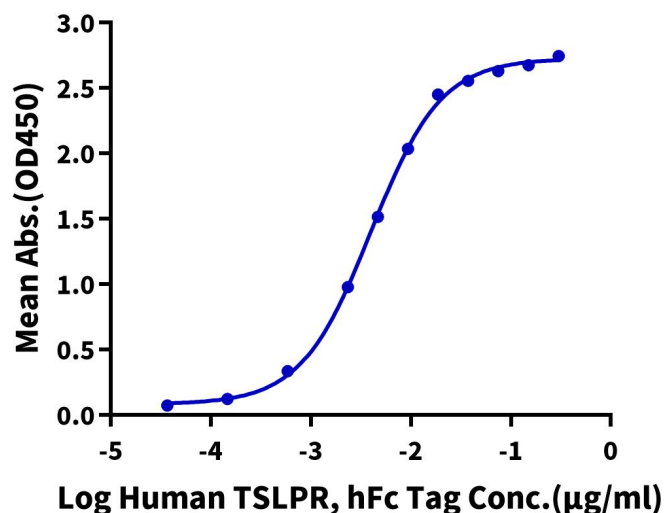


The purity of Human TSLPR is greater than 95% as determined by SEC-HPLC.

ELISA Data

**Human TSLPR, hFc Tag ELISA**

0.2µg Human TSLP (R127A, R130A), His Tag Per Well

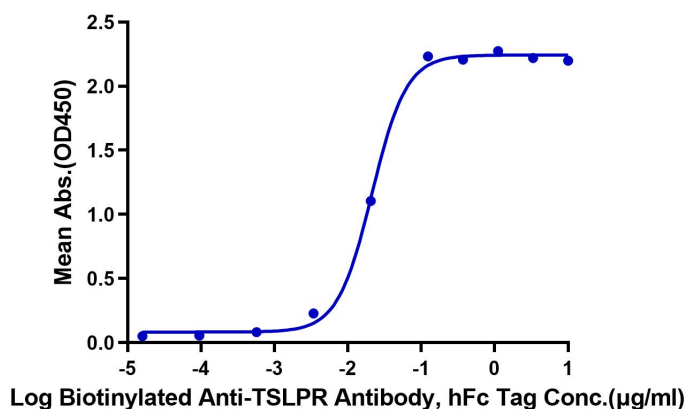


Immobilized Human TSLP (R127A, R130A), His Tag at 2µg/ml (100µl/Well). Dose response curve for Human TSLPR, hFc Tag with the EC50 of 4.0ng/ml determined by ELISA (QC Test).

ELISA Data

**Human TSLPR, hFc Tag ELISA**

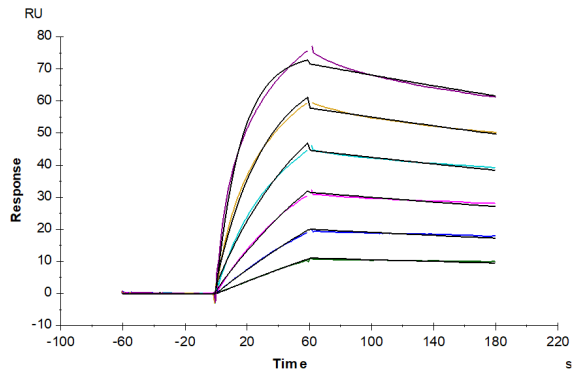
0.05µg Human TSLPR, hFc Tag Per Well



Immobilized Human TSLPR, hFc Tag at 0.5µg/ml (100µl/well) on the plate. Dose response curve for Biotinylated Anti-TSLPR Antibody, hFc Tag with the EC50 of 21.4ng/ml determined by ELISA.

SPR Data

Assay Data



Human TSLP, His Tag captured on CM5 Chip via Anti-His Antibody can bind Human TSLPR, hFc Tag with an affinity constant of 1.04 nM as determined in SPR assay (Biacore T200).